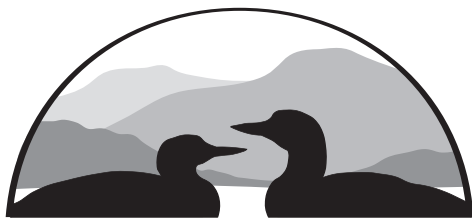


New Hampshire Bird Records



Fall 2010

Vol. 29, No. 3



New Hampshire Bird Records

Volume 29, Number 3

Fall 2010

<i>Managing Editor:</i>	Rebecca Suomala 603-224-9909 X309, bsuomala@nhaudubon.org
<i>Text Editor:</i>	Dan Hubbard
<i>Season Editors:</i>	Eric Masterson/Lauren Kras/ Ben Griffith, Spring; Tony Vazzano, Summer; Stephen Mirick, Fall; Pamela Hunt, Winter
<i>Layout:</i>	Kathy McBride
<i>Assistants:</i>	Jeannine Ayer, Dave Howe, Margot Johnson, Susan MacLeod, Marie Nickerson, Carol Plato, William Taffe, Jean Tasker, Tony Vazzano
<i>Field Notes:</i>	Robert A. Quinn
<i>Photo Quiz:</i>	David Donsker
<i>Photo Editor:</i>	Jon Woolf
<i>Web Master:</i>	Len Medlock
<i>Editorial Team:</i>	Phil Brown, Hank Chary, David Deifik, David Donsker, Dan Hubbard, Pam Hunt, Iain MacLeod, Len Medlock, Stephen Mirick, Robert A. Quinn, Rebecca Suomala,

Cover Photos: Black Skimmer by Leonard Medlock, 9/10/10, Rye, NH and inset, 10/30/10, Hampton Beach, NH.

New Hampshire Bird Records is published quarterly by New Hampshire Audubon's Conservation Department. Bird sightings are submitted to NH eBird (www.ebird.org/nh) by many different observers. Records are selected for publication and not all species reported will appear in the issue. The published sightings typically represent the highlights of the season. All records are subject to review by the NH Rare Birds Committee and publication of reports here does not imply future acceptance by the Committee. Please contact the Managing Editor if you would like to report your sightings but are unable to use NH eBird.

New Hampshire Bird Records © NHA May, 2011
www.nhbirdrecords.org

Published by New Hampshire Audubon's Conservation Department



Printed on Recycled Paper

IN HONOR OF *Margot Johnson*

This issue of New Hampshire Bird Records with its color cover is sponsored by New Hampshire Audubon staff and the New Hampshire Bird Records Editorial Team in honor of Margot Johnson's many years of volunteer work for New Hampshire Bird Records and her 90th birthday.



Margot Johnson during her first year of volunteering for New Hampshire Audubon's Concord Center in June of 1989.

In This Issue

From the Editor	2
Photo Quiz	3
Fall Season: August 1 through November 30, 2010	4
<i>by Stephen R. Mirick</i>	
Field Notes	47
Using eBird to Find When and Where a Species Occurs	48
<i>by Steve Mirick</i>	
Volunteers and Research – Introduction to HawkCount.org	51
<i>by Iain MacLeod</i>	
Photo Gallery – Cave Swallows in November	52
Musings from Pack Monadnock's Hawkwatch	54
<i>by Iain MacLeod</i>	
Spotlight on Orange-crowned Warbler	58
<i>by Robert A. Quinn</i>	
Herring and Seabirds: Prey to Industrialized Fishing	62
<i>by Greg Wells</i>	
Answer to the Photo Quiz	65
<i>by David B. Donsker</i>	
Corrections	68

Female Peregrine Falcon returns to Concord

by Chris Martin

10/29/10, Concord, NH

Despite the mild weather, here's a sure sign that winter's coming ...

Robert Vallieres just called to report that he has confirmed the presence of 8.5 year old adult female Peregrine Falcon, 1807-76404 (black/green U/6), at the Christian Science Church steeple in downtown Concord, NH. This individual Peregrine Falcon has been confirmed in Concord during the fall/winter season in each of the past four years. This bird is the breeding female Peregrine from Square Ledge in the White Mountain National Forest in Albany, NH. We have confirmed her presence at Square Ledge during the 2004, 2005, 2007, 2008, 2009, and 2010 breeding seasons. She was originally banded as one of four chicks at Abeniki Mountain in Dixville, NH in 2002 (see photo).



Concord's Peregrine Falcon U/6 as a chick in 2002.
Photo by Mike Pelchat.

Using eBird to Find When and Where a Species Occurs

by Steve Mirick

One of the powers (and problems for editors!) of using eBird for data entry is that it allows for a much greater number of bird reports from all birders. The greater number of bird reports allows a better statistical analysis for ALL of New Hampshire's birds, not just the rare birds. It also gives a better visual representation of the seasonal status and statewide distribution of species in New Hampshire.

On-line, there is a fun and informative way to look at New Hampshire's birds using eBird. From the "Home Page" tab of eBird, click on the "View and Explore Data" tab on the top of the screen. From this menu, you can follow several paths to look at data. For this exercise, choose "Bar Charts".

A screen will appear which asks you to "Choose a Location". The default state should be New Hampshire if you are using the New Hampshire eBird portal (www.ebird.org/nh). If you are traveling for vacation, you can explore the bar charts for another state, but for now, we will look at New Hampshire. You can select either the entire state by checking the box "Entire region" on the right or, if you are just

Figure 1. eBird bar charts showing the occurrence of species in New Hampshire throughout the season. Scrolling down will show more species.

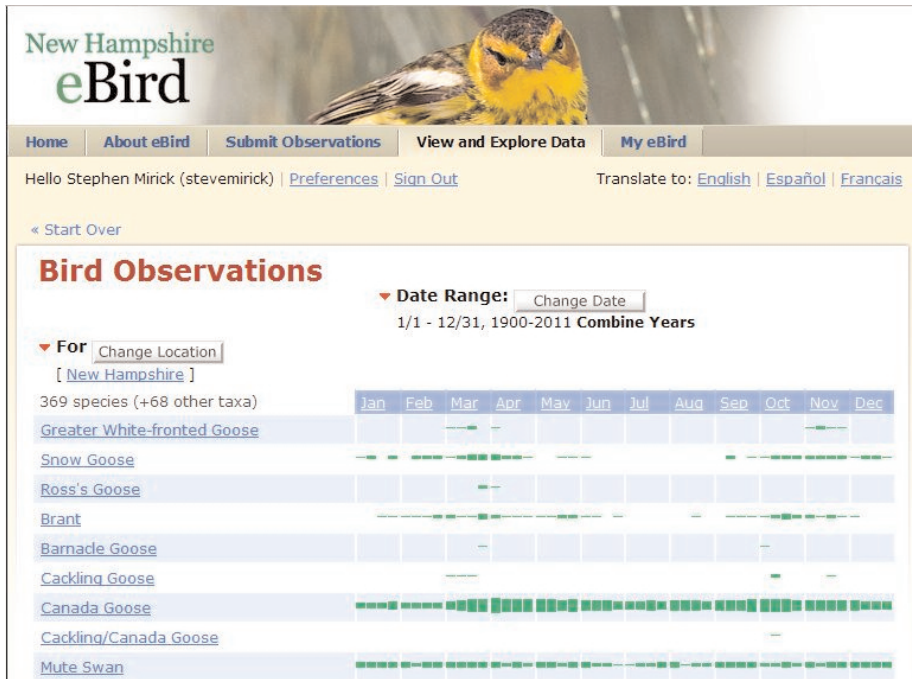
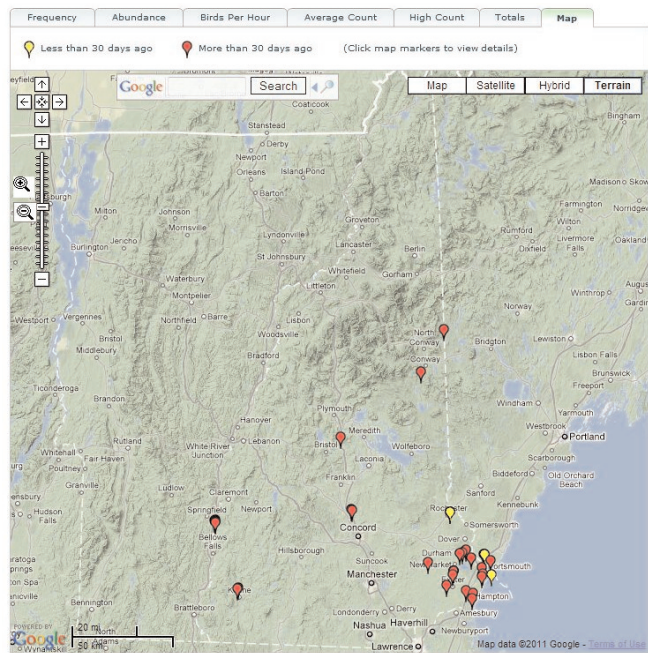


Figure 2. eBird map showing the location of Northern Shoveler sightings in New Hampshire. Darker pins are red, lighter ones are the yellow locations with sightings in the last 30 days.



interested in sightings from a specific county or region, then select one of the other options. If you select the entire region, than the software will search a greater number of data points and will produce a better bar chart representation. You will now be at the screen shown in Figure 1.

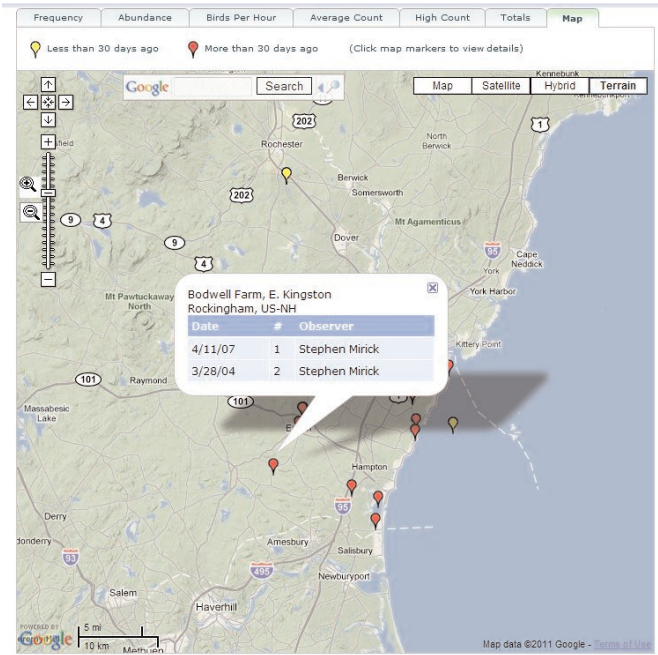
You now have an incredible amount of information at your finger tips! You can scroll down to see when any of the 369 species reported to eBird for New Hampshire are most likely to be seen in the state! Bear in mind, however, that the data is somewhat flawed by multiple observations of the same bird. This is seen by the relative thickness of the bar for Ross’s Goose, which has only been recorded once in the state, but was seen by scores of birders!

For even more information, try clicking on any of the species names in order to see where the reports are coming from. A map of the state will appear with red markers (often called “pins”) showing “historic” locations, and yellow markers indicating current records within the last 30 days. Figure 2 shows an example for Northern Shoveler.

You can move the map and zoom in to particular areas or sightings. Click on any of the red or yellow markers and you will get more specific information for each of the sightings. For example, let’s look at one of the Northern Shoveler locations in interior southeast New Hampshire. By zooming in and clicking the red marker, you can find the name of the location and get a record of sightings from that location (Figure 3).

Needless to say, there is a tremendous amount of information available through the eBird web pages. Give it a try and explore the options!

Figure 3. eBird details on Northern Shoveler sightings from the red marker at the Bodwell Farm in East Kingston.



Abbreviations Used

BBC	Brookline Bird Club	R.	River
BBS	Breeding Bird Survey	Rd.	Road
CA	Conservation Area	Rt.	Route
CC	Country Club	SF	State Forest
CFT	NH Audubon Chapter Field Trip	SP	State Park
FT	Field Trip	SPNHF	Society for the Protection of NH Forests, Concord
IBA	Important Bird Area	T&M	Thompson & Meserves (Purchase)
L.	Lake	TNC	The Nature Conservancy
LPC	Loon Preservation Committee	WMA	Wildlife Management Area
NA	Natural Area	WMNF	White Mountain National Forest
NHA	New Hampshire Audubon	WS	NHA Wildlife Sanctuary
NHBR	New Hampshire Bird Records	~	approximately
NHRBC	NH Rare Birds Committee	WTP	Wastewater Treatment Plant
NWR	National Wildlife Refuge		
PO	Post Office		

Rare Bird ALERT ☎ 224-9909

Available twenty-four hours a day!

Also online at www.nhaudubon.org

NHBR Subscription Form

☐ I would like to subscribe to *NH Bird Records*.

☐ NHA Member \$25.00 ☐ Non-member \$35.00

All renewals take place annually. Mid-year subscribers will receive all issues published in the subscription year.

☐ I would like to join NHA and receive *NH Bird Records* at the member price.

☐ Family/\$55 ☐ Individual/\$39 ☐ Senior/\$24

Name: _____

Phone: _____

Address: _____

Town: _____ State: _____ Zip: _____

Payment is by:

☐ check enclosed — payable to NH Audubon ☐ MC ☐ VISA

Card # _____ Exp. Date _____

Return to:

Membership Department, NH Audubon, 84 Silk Farm Rd., Concord, NH 03301

Subscribe online at www.nhbirdrecords.org